

Interprofessional education for planetary health



EDUCATION

Planetary Health Education at LMU

Mapping Exercise of teaching and training opportunities within LMU Munich compared to the national learning competency framework of medical education

Findings

Overall 66 learning opportunities were identified
More competencies related to knowledge were identified compared to responsibility and transformation

Next steps

Identification of mandatory learning objectives
Integration of Planetary Health topics into the curriculum (and not only to extracurricular activities)

European Green Deal



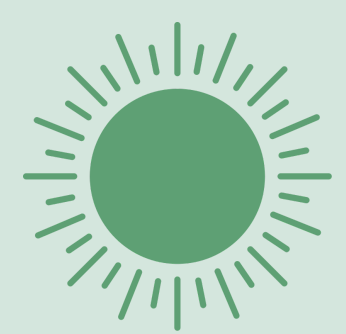
German Sustainability Codex



Green Hospital Initiative Bayern



Gemeinsam. Fürsorglich. Wegweisend.



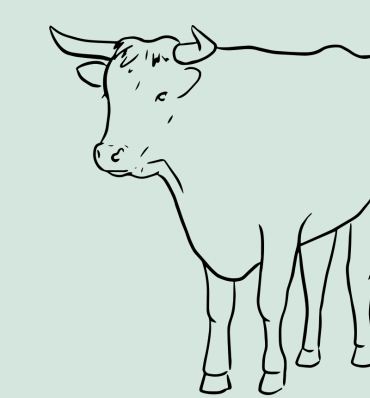
PREVENTION/ HEAT

New ICEP Faculty Research Project

focusing on the impact of Heat Waves on refugees by enabling conversations between the students and refugees living in Munich - an interdisciplinary project involving communication science, public health and social workers

NUTRITION

3,1% of all emissions in Germany caused by hospitals
17% of those emissions caused by food, mainly animal products



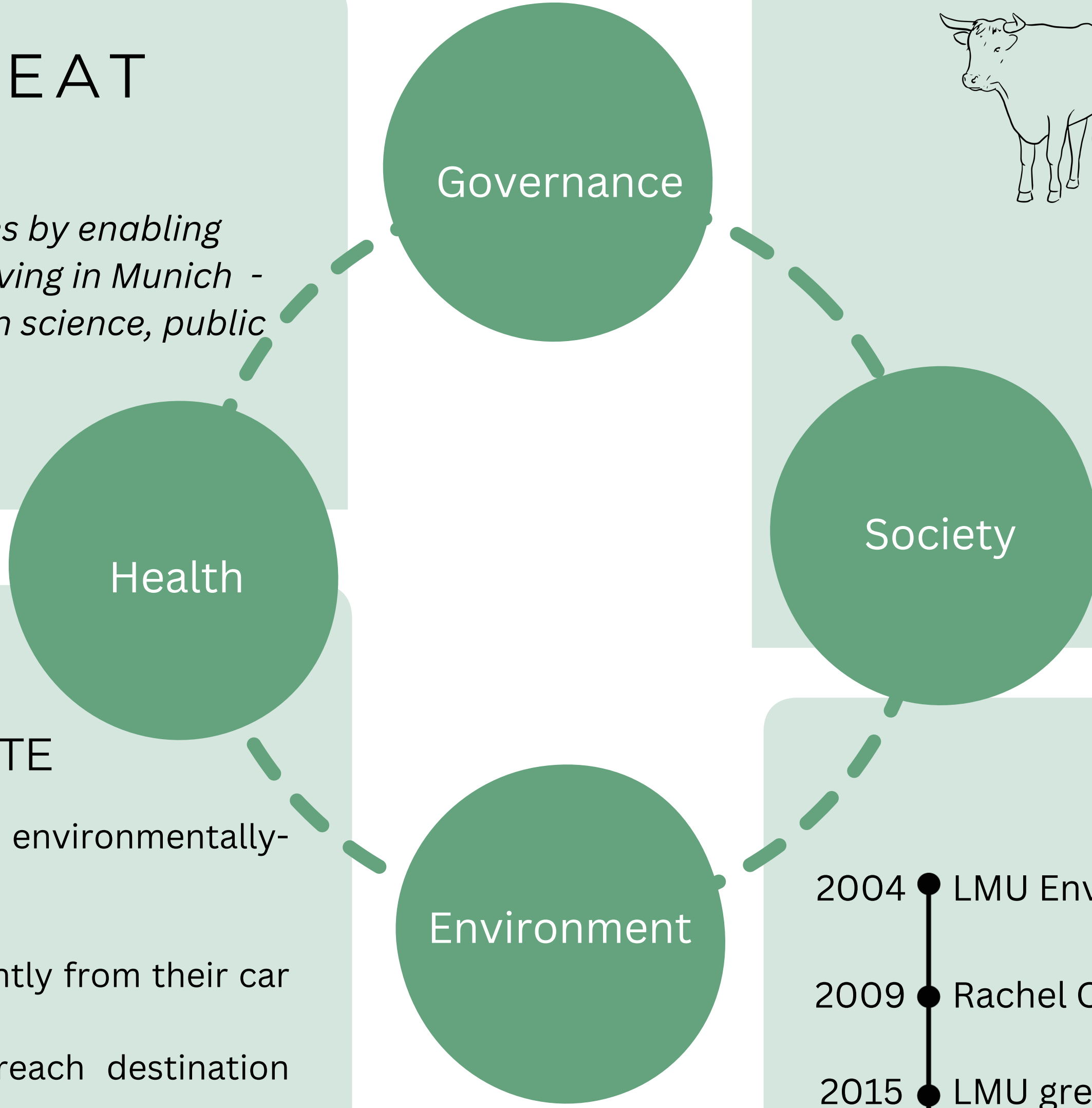
Measures taken

→ In Cooperation with Munich student association:

- Vegetarian/vegan meal options in cafeteria
- Usage of mainly regional and Seasonal produce
- exclusively MSC-Certified fish
- Fairtrade Chocolate and coffee
- improved meal planning - Waste reduction
- Extra charge for disposable cups

Further Goals:

- Reduction of Waste
- Adherence to Planetary health diet



CITY CYCLING CYCLING FOR A BETTER CLIMATE

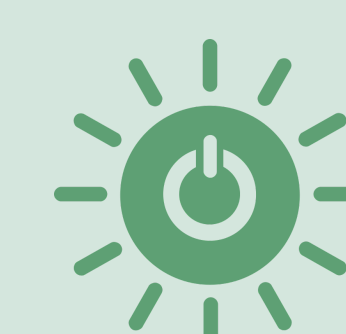
- completing as many daily journeys as possible in an environmentally-friendly manner
- using your bike over a 21-day period
- to encourage even more people to switch permanently from their car to a bike
- we need cycling infrastructure that allows to reach destination quickly and safely
- targets local politicians
- the politicians themselves take the bike to find out for themselves where their municipality meets the requirements of cyclists well and where is still room for improvement
- routes tracked by the CITY CYCLING app are anonymised and evaluated by the Technical University in Dresden



LMU MUNICH



- 2004 • LMU Environmental Guidelines
- 2009 • Rachel Carson Center for Environment and Society
- 2015 • LMU green initiative spanning all faculties
- 2020 • LMU climate Forum
- 2021 • Memorandum of understanding signed by all Bavarian universities



Goal of climate neutrality in 2030



Supporting sustainable Behaviour



University originating Green Startups

PHARMACEUTICAL WASTE REDUCTION



EAHP (=European Association of Hospital Pharmacists) supports member states in introducing sustainability measures at the local, regional or european level.

Concepts are being developed to address environmental pollution associated with pharmaceuticals and their production and use.

- Inventory management: minimize overstocking and expiration of medications
- Patient education: proper medication use, storage, disposal, do not stockpile unused medications
- Prescription accuracy: encourage healthcare professionals to prescribe medications with accurate dosages and durations, avoiding excessive or unnecessary quantities
- Return and disposal programs: take-back program or designated collection places
- Donation programs: unused medications can be collected and redistributed to people in need or charitable organizations



NEW LMU UNIVERSITY HOSPITAL BUILDINGS WILL FULLFILL SUSTAINABILITY STANDARDS